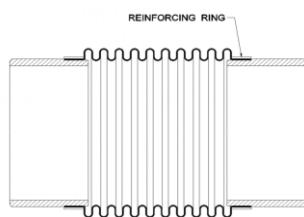


Compensatori Coperti da Certificazione

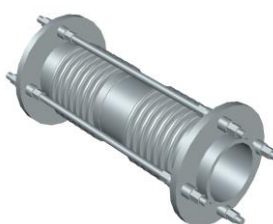
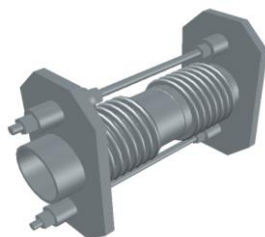
Modelli: [EX06 - EX12 - EX16](#)



Serie	Code	Diameter		Ply x thk.	Pitch	Height	Convolutions
		Inch	mm				
EX06	EX06300	12"	320	3 x 0.4 mm	18.75 mm	14.3 mm	8
	EX06350	14"	354	3 x 0.4 mm	18.75 mm	13.3 mm	8
	EX06400	16"	402	3 x 0.4 mm	21.43 mm	14.9 mm	7
	EX06450	18"	453	3 x 0.4 mm	21.43 mm	15.9 mm	7
	EX06500	20"	501	3 x 0.4 mm	21.43 mm	18.5 mm	7
	EX06600	24"	600	4 x 0.4 mm	25	20 mm	6
EX12	EX12050	2"	60	3 x 0.3 mm	7.9 mm	6.3 mm	19
	EX12100	4"	112	3 x 0.3 mm	13.63 mm	9.0 mm	11
	EX12125	5"	140	3 x 0.3 mm	15 mm	9.9 mm	10
	EX12150	6"	167	3 x 0.4 mm	16.6 mm	11.4 mm	9
	EX12200	8"	219	3 x 0.4 mm	16.6 mm	12.9 mm	9
	EX12250	10"	270	4 x 0.4 mm	18.75 mm	13 mm	8
EX16	EX16065	2"1/2	76	3 x 0.3 mm	10.7 mm	6.9 mm	14
	EX16080	3"	88	3 x 0.3 mm	12.5 mm	8.1 mm	12

Couplings: Weld End, Flange

Modelli: [EX***BAU](#)



Serie	Code	Diameter		Ply x thk.	Pitch	Height	Convolutions
		Inch	mm				
EX***BAU	EX080BAU	3"	88	5 x 0.4 mm	10 mm	8.2 mm	2 x 6
	EX100BAU	4"	114	5 x 0.4 mm	10 mm	9.8 mm	2 x 6

TYPE APPROVAL DNV GL

TAP0000049

